

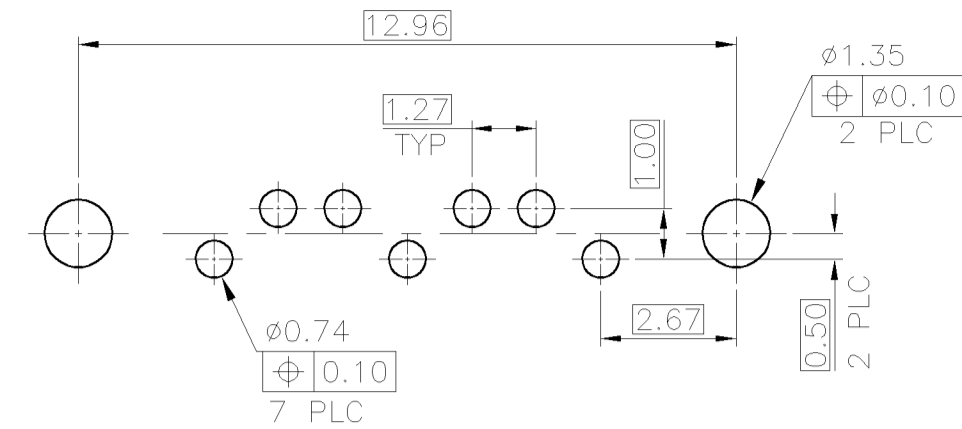
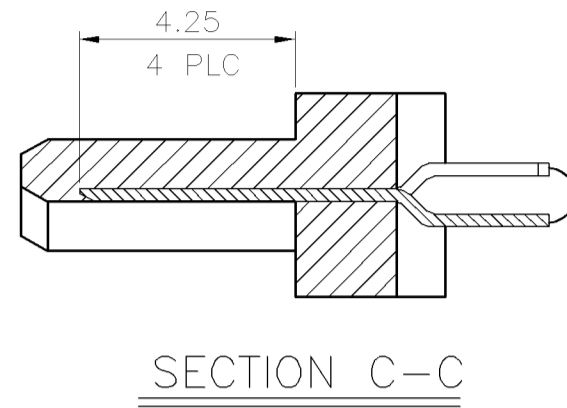
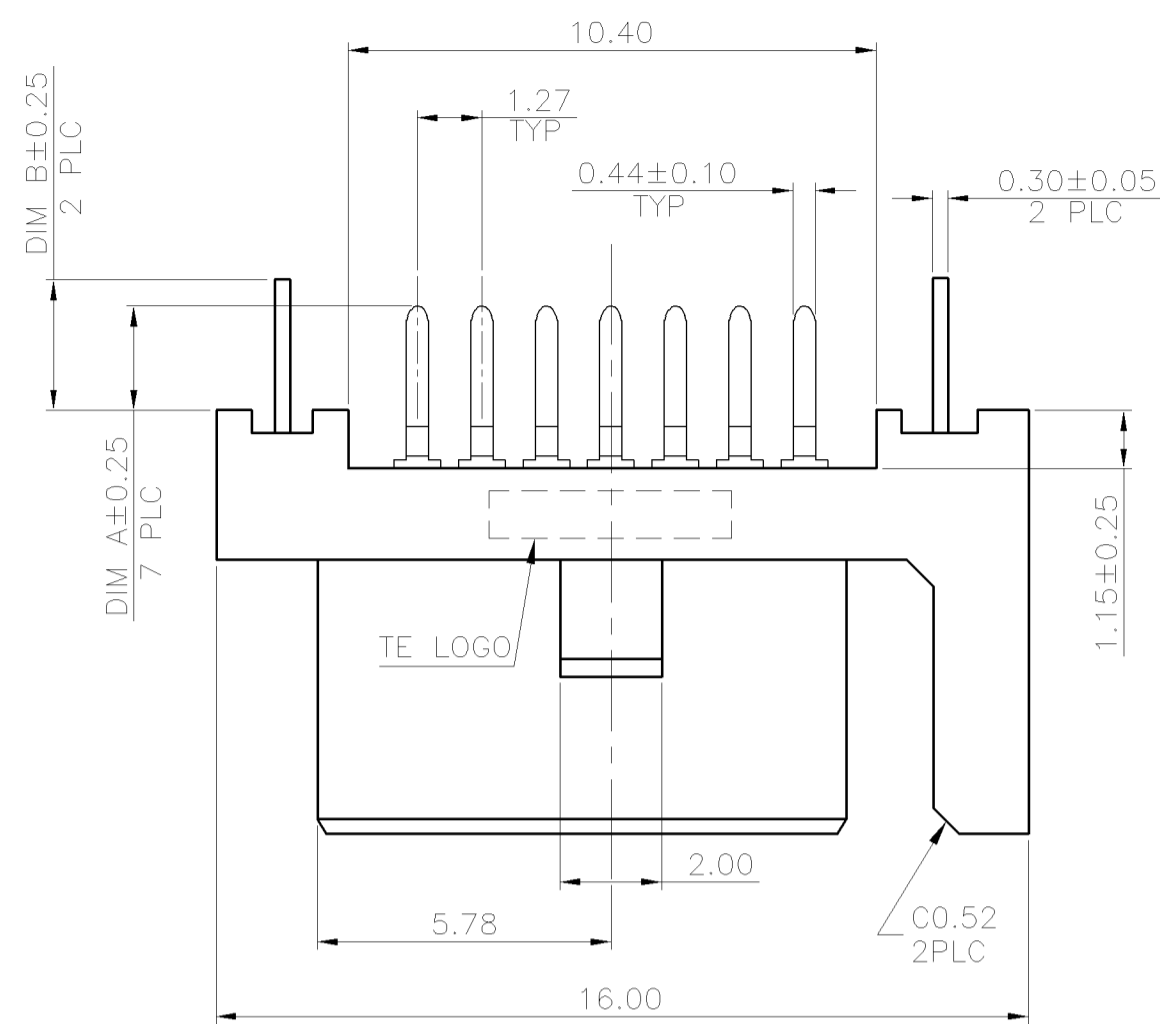
NUMBER  
C-1734699

3RD ANGLE PROJECTION

METRIC

THIS INFORMATION IS CONFIDENTIAL AND IS DISCLOSED TO YOU ON CONDITION THAT NO FURTHER DISCLOSURE IS MADE BY YOU TO OTHER THAN AMP PERSONNEL WITHOUT WRITTEN AUTHORIZATION FROM AMP (TAIWAN) LTD.

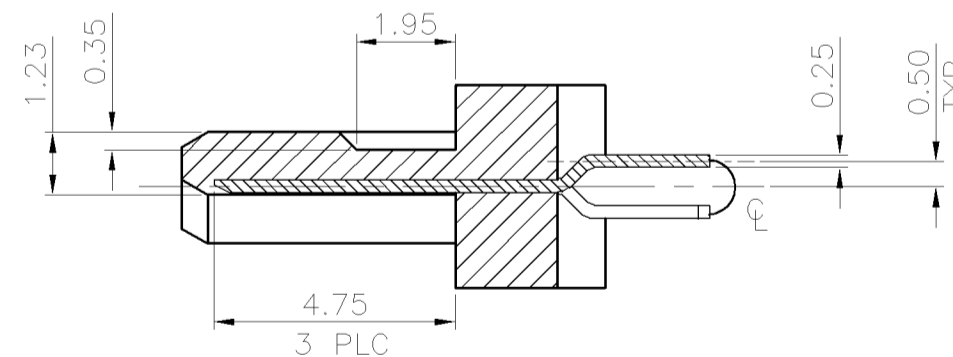
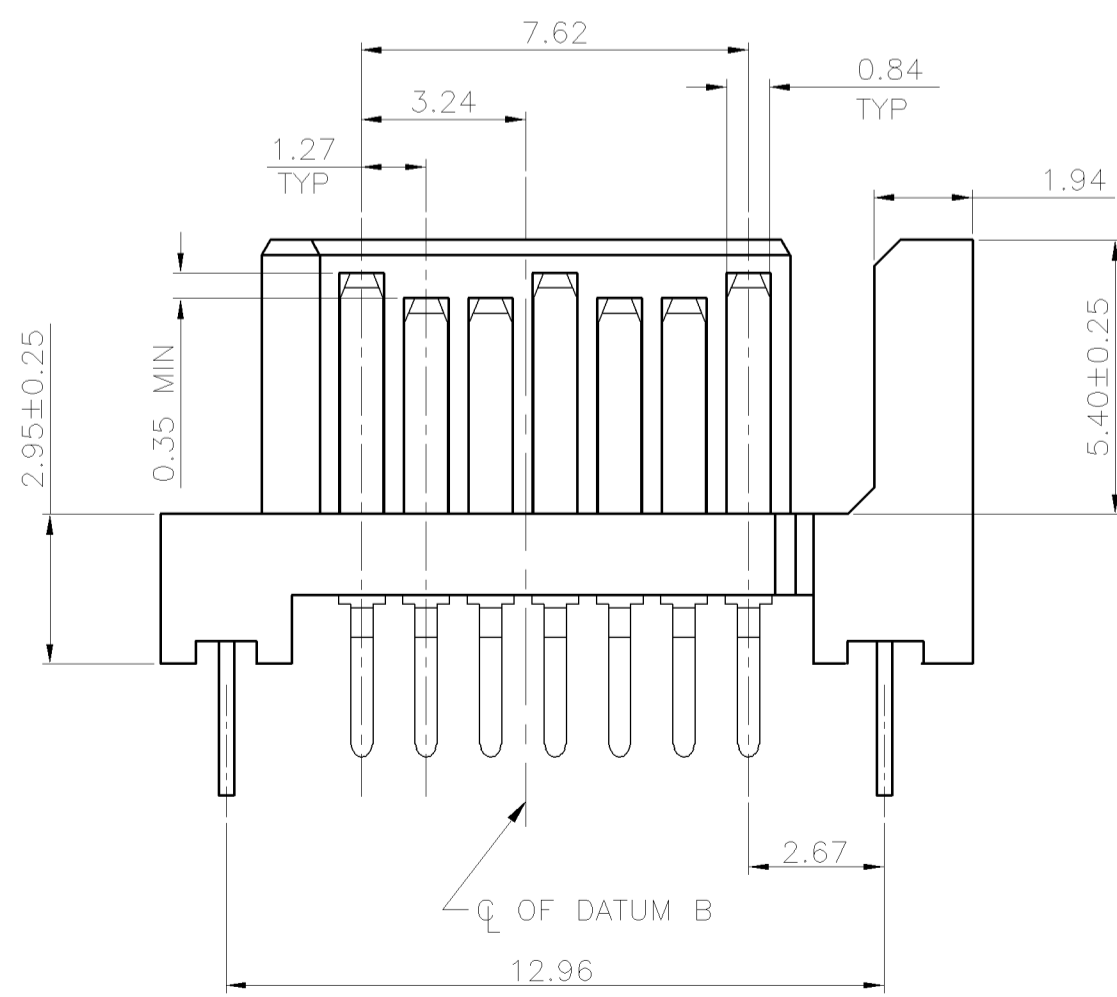
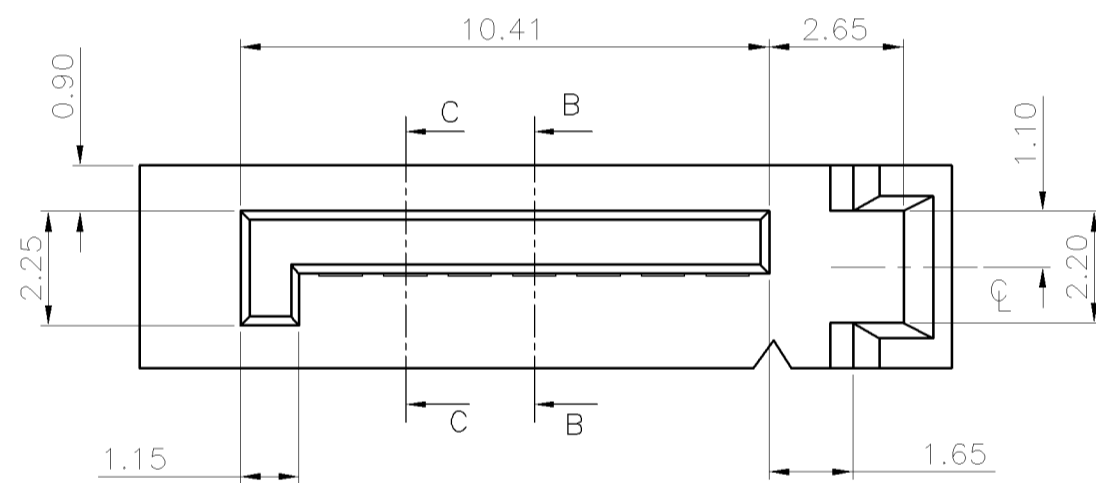
PRINT  
DW



RECOMMENDED PCB LAYOUT  
PCB TOLERANCE: ±0.05

NOTE:

- MATERIAL:  
HOUSING: LCP WITH 30% GF, UL 94V-0, BLACK COLOR.  
OR  
PA6T WITH 30% GF, 33% REGRIND, UL 94V-0, BLUE OR WHITE COLOR.  
CONTACTS: BRASS.  
BOARDLOCKS: BRASS.
- FINISH:  
CONTACTS: (SEE TABLE) GOLD PLATED ON CONTACT AREA, 2.54μm [100μ"] MIN. MATTE-TIN ON SOLDER TAIL, WITH ENTIRE CONTACT UNDERPLATED 1.27μm [50μ"] MIN. NICKEL.  
BOARDLOCKS: 1.27μm [50μ"] MIN. NICKEL OVER 2.54μm [100μ"] MIN. TIN PLATED.
- WAVE SOLDER CAPABLE TO 265°C PER TEST SPEC. 109-202, CONDITION B.



SECTION B-B

DIMENSIONS	A	HOUSING COLOR	MIN. GOLD THICKNESS	PART NUMBER
3.37	3.3	BLUE (293C)	0.381μm [15μ"]	1-1734699-5
		BLACK		1-1734699-4
3.37	3	BLUE (293C)	0.381μm [15μ"]	1-1734699-3
		BLACK		1-1734699-2
2.57	2.05	WHITE	0.762μm [30μ"]	1734699-9
			0.381μm [15μ"]	1734699-8
			GOLD FLASH	1734699-7
		BLUE (293C)	0.762μm [30μ"]	1734699-6
			0.381μm [15μ"]	1734699-5
			GOLD FLASH	1734699-4
BLACK	0.762μm [30μ"]	1734699-3		
	0.381μm [15μ"]	1734699-2		
	GOLD FLASH	1734699-1		

LTR	REVISION RECORD	ECN	DWN	CHK	DATE
C	ADD PART NUMBERS	ECR-08-016988	AW	SC	07JUL 2008
B	ADD PART NUMBERS	ECR-08-000514	AW	SH	08JAN 2008
A	ADD PART NUMBERS	ECR-06-026749	AW	SH	14NOV 2006

TOLERANCES UNLESS OTHERWISE SPECIFIED: 0 PLC ± 1 PLC ±0.3 2 PLC ±0.25 3 PLC ± ANGLES ±3°	DWN A. WU 06-JUN-2008
MATERIAL SEE NOTE	CHK S. HOU 06-JUN-2008
FINISH SEE NOTE	APVD W. KODAMA 06-JUN-2008
	PRODUCT SPEC 108-57469
	QUALIFICATION TEST REPORT 501-57539
	WEIGHT 0.48 g

Tyco Electronics Corporation Taipi, Taiwan		NAME SERIAL ATA, 7 POS., PLUG, VERTICAL, A TYPE, DIP.	
LOC DW	SIZE A <sub>3</sub>	DRAWING NO C-1734699	REV C
SCALE --		SHEET 1 OF 2	

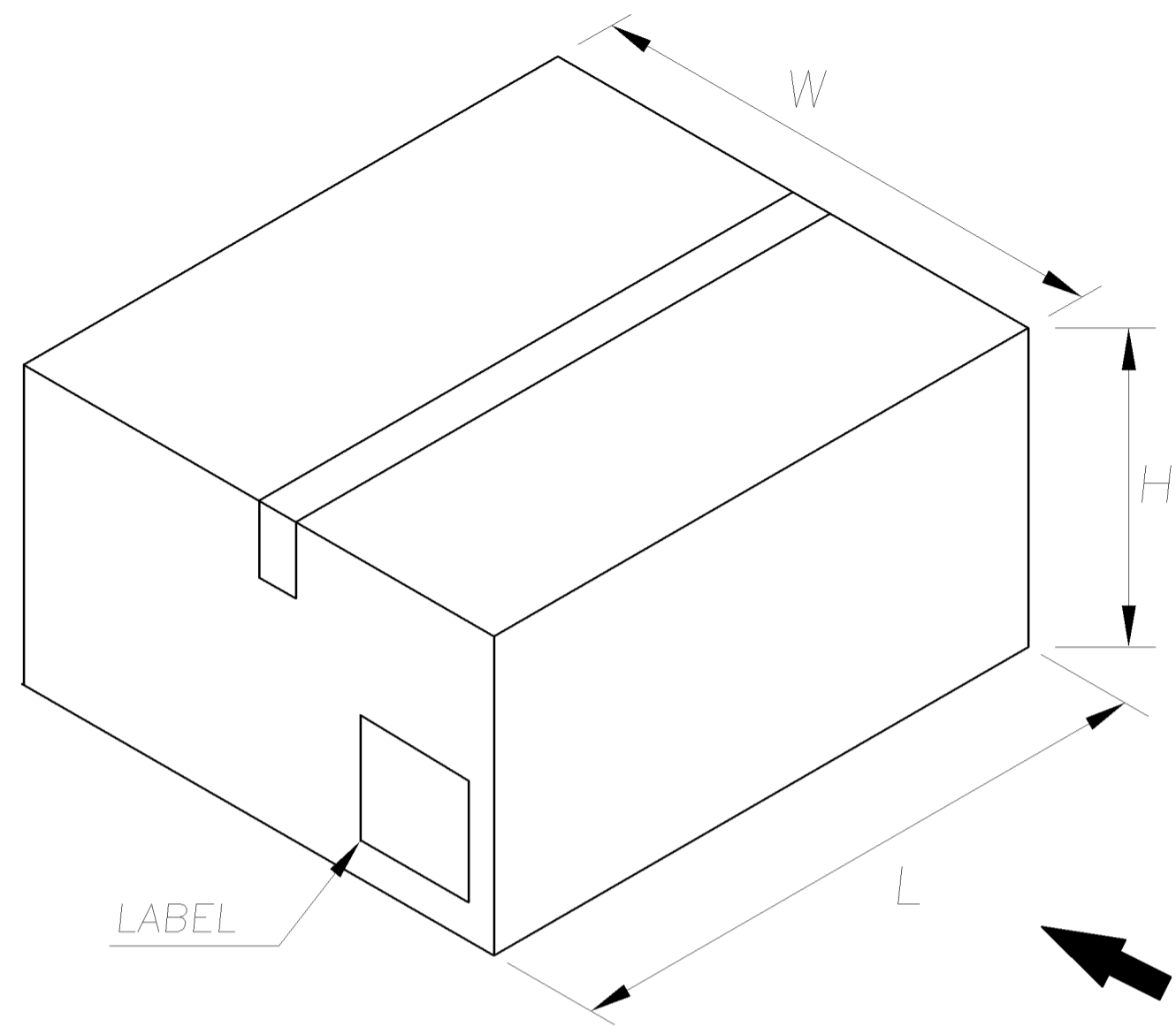
NUMBER  
C-1734699

3RD ANGLE PROJECTION

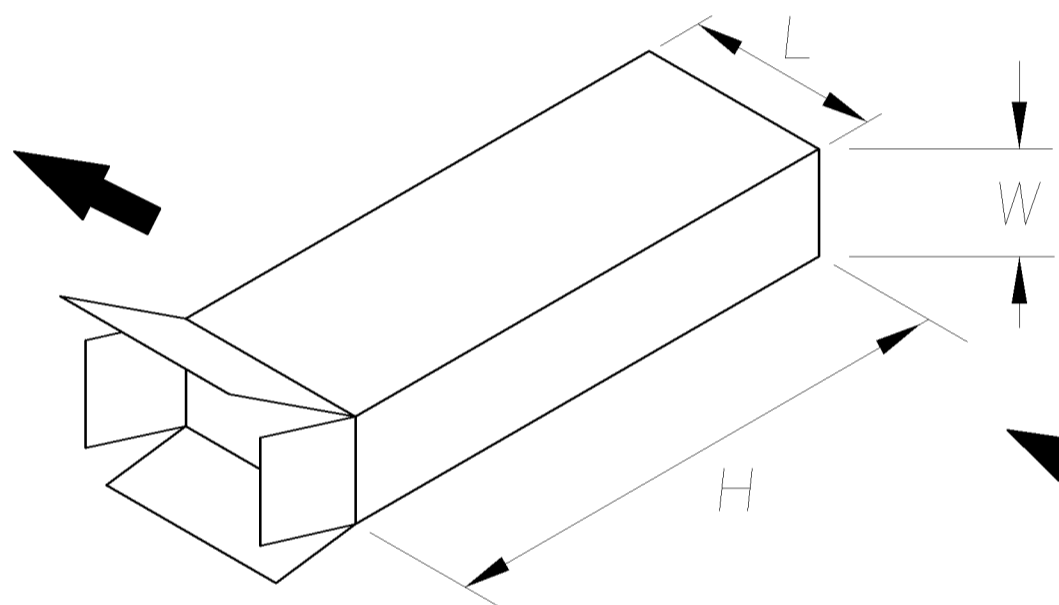
METRIC

THIS INFORMATION IS CONFIDENTIAL AND IS DISCLOSED TO YOU ON CONDITION THAT NO FURTHER DISCLOSURE IS MADE BY YOU TO OTHER THAN AMP PERSONNEL WITHOUT WRITTEN AUTHORIZATION FROM AMP (TAIWAN) LTD. DIMENSIONS IN MILLIMETERS. DO NOT SCALE PRINT.

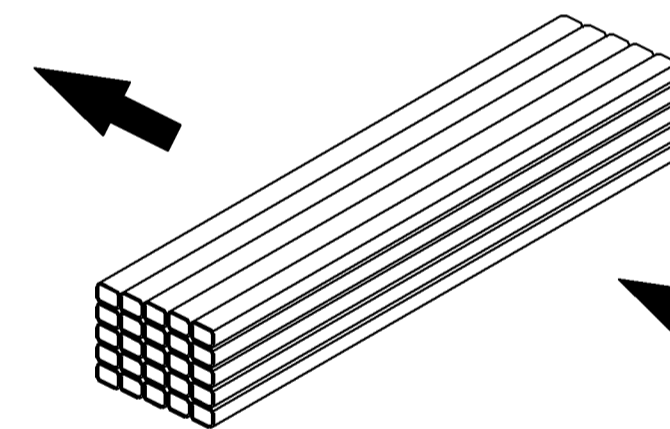
PRINT DIST  
DW



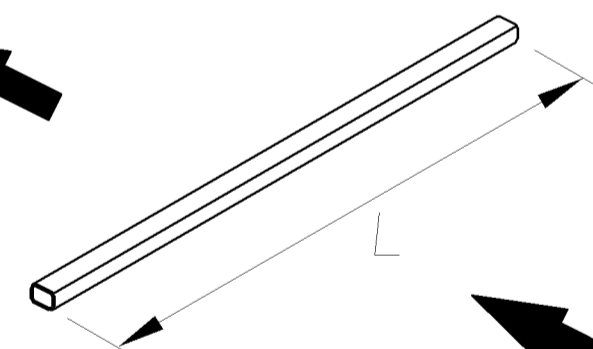
SHIPPING BOX



INNER CARTON



SHEAF



TUBE



NOTE:

- DIMENSION:  
TUBE: L= 340, W= 12.65, H= 5.8  
INNER CARTON: L= 140, W= 77, H= 355  
SHIPPING BOX: L= 372, W= 293, H= 172
- QUANTITY:  
20 PCS/TUBE  
50 TUBES/SHEAF  
2 SHEAFS/INNER CARTON  
4 INNER CARTONS/SHIPPING BOX  
8000 PCS/SHIPPING BOX
- WEIGHT:  
NET WEIGHT: 7.5 KG  
GROSS WEIGHT: 8.5 KG

	SEE SHEET 1			
LTR	REVISION RECORD	ECN	DWN CHK	DATE

TOLERANCES UNLESS OTHERWISE SPECIFIED: 0 PLC ±- 1 PLC ±- 2 PLC ±- 3 PLC ±- ANGLES ±-		DWN A. WU 06-JUN-2008	Tyco Electronics Corporation Tapei, Taiwan	
MATERIAL -		CHK S. HOU 06-JUN-2008	NAME SERIAL ATA, 7 POS., PLUG, VERTICAL, A TYPE, DIP.	
FINISH -		APVD W. KODAMA 06-JUN-2008	LOC DW	REV C
WEIGHT -		PRODUCT SPEC -	SCALE --	SHEET 2 OF 2
		APPLICATION SPEC -	DRAWING NO C-1734699	